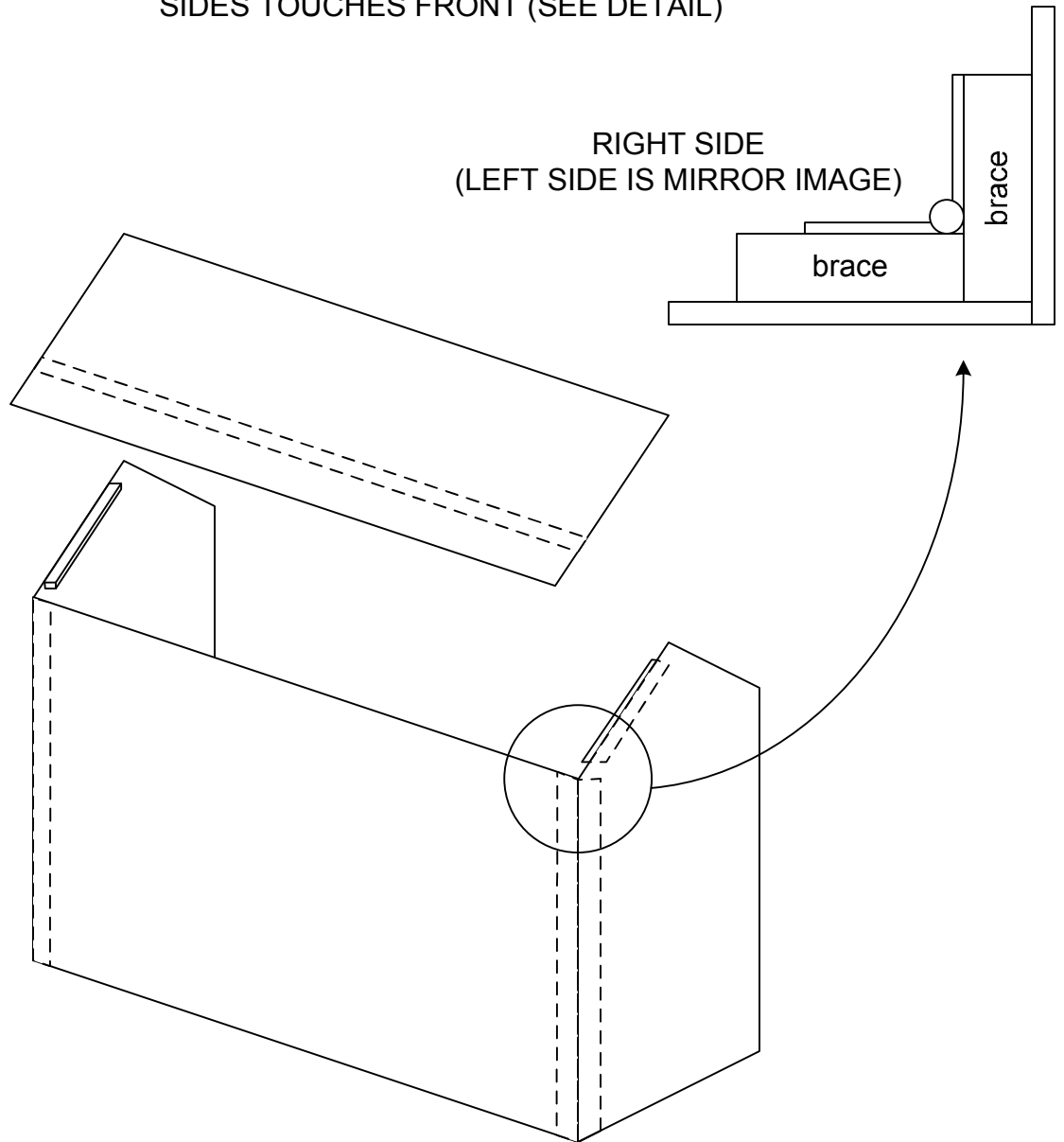
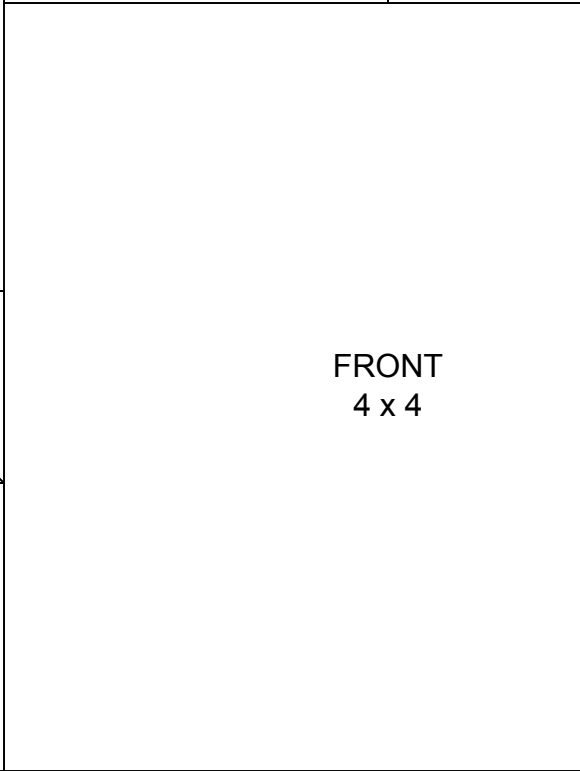
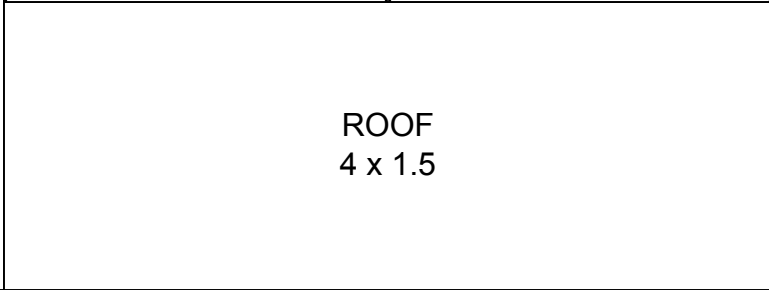
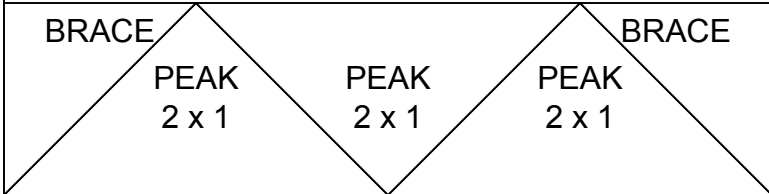
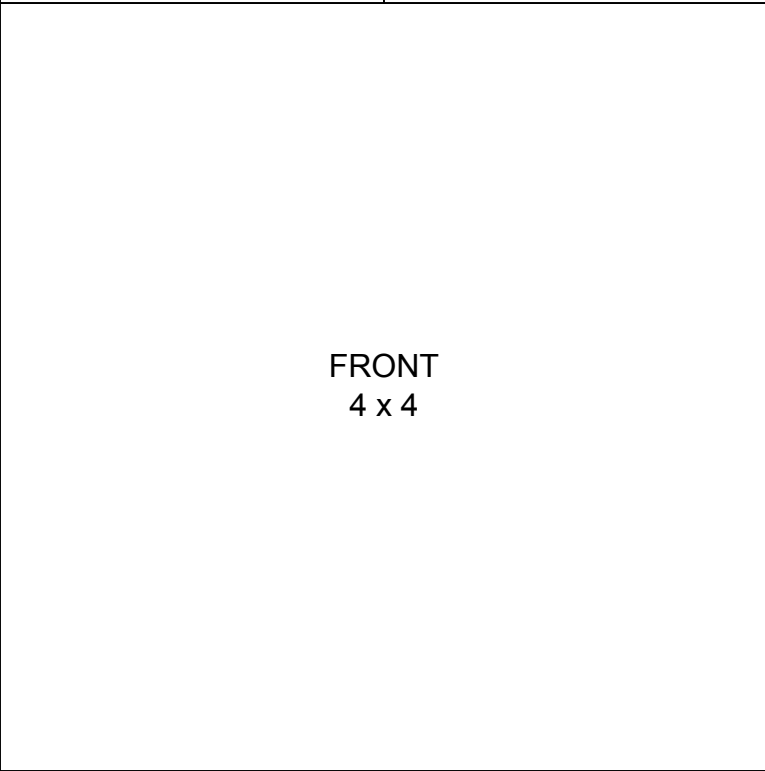
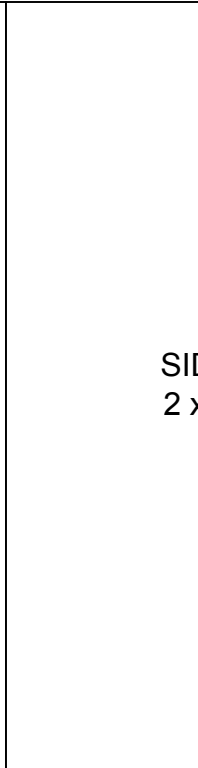
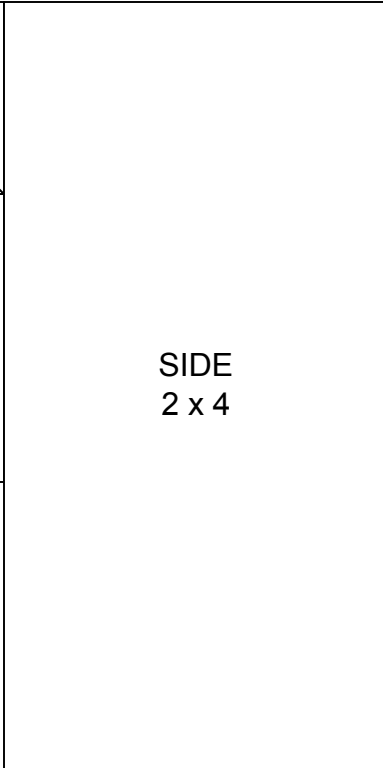
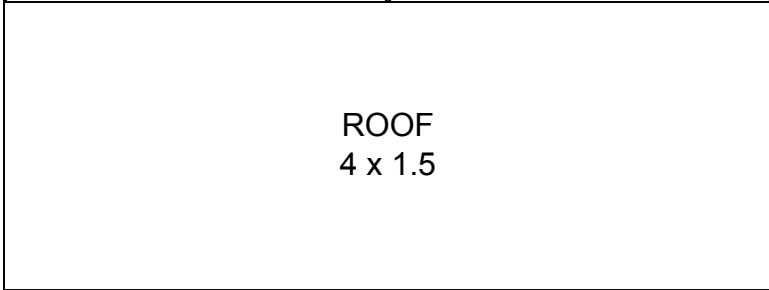
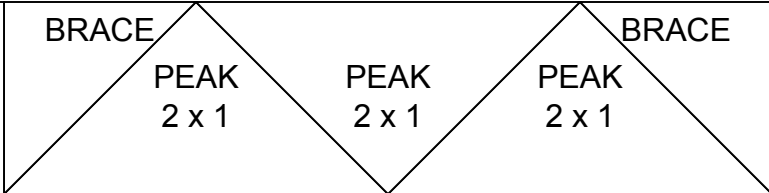
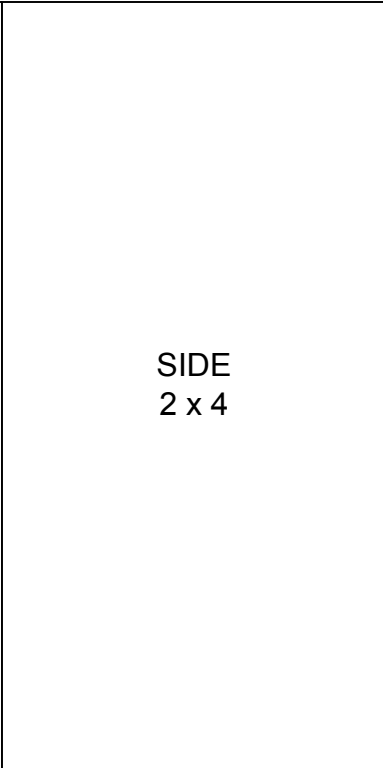
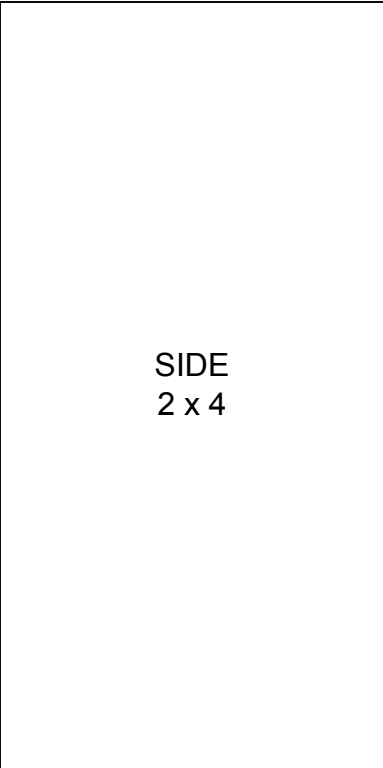
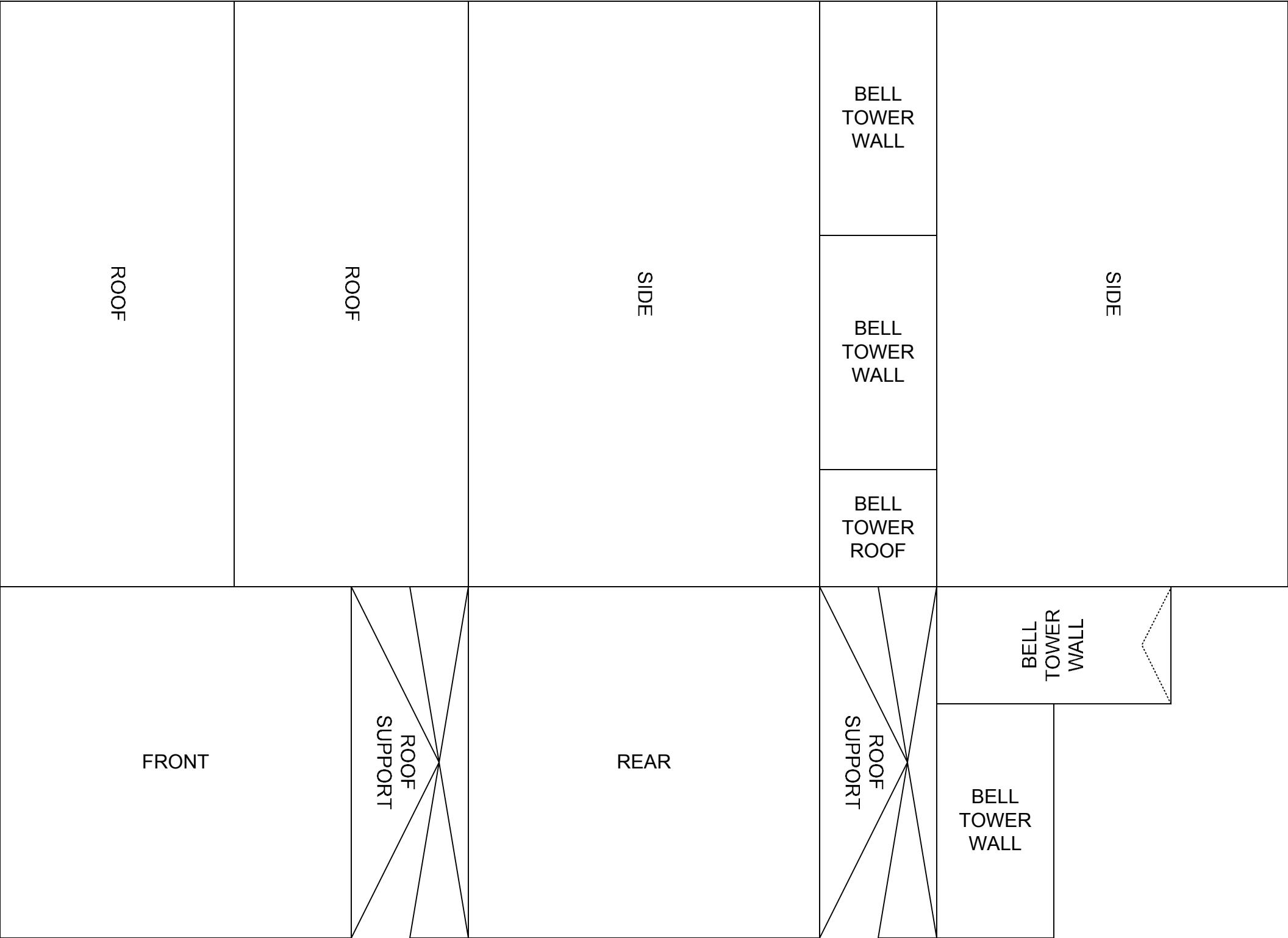


- RIP AN 8' 2x4 INTO $\frac{3}{4}$ " STRIPS TO SERVE AS BRACING
- USE 2" HINGES TO CONNECT FRONT AND SIDES
- OFFSET CORNER BRACING SO THAT BRACING ON SIDES TOUCHES FRONT (SEE DETAIL)







ROOF

ROOF

SIDE

BELL
TOWER
WALL

BELL
TOWER
WALL

BELL
TOWER
ROOF

SIDE

FRONT

ROOF
SUPPORT

REAR

ROOF
SUPPORT

BELL
TOWER
WALL

BELL
TOWER
WALL

